

ELECTRIC HYDRAULIC PUMP

UP-35RH-1M series



Model : UP-35RH1MB

- Standard Tank Oil : 1.0 Litre
- Effective Oil : 0.8 Litre



Model : UP-35RH 1M

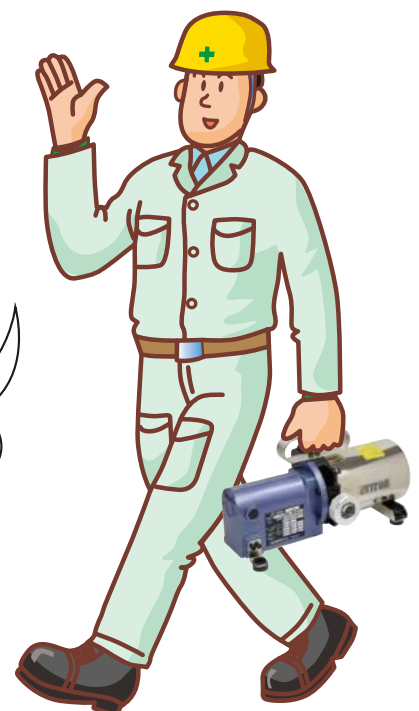
- Standard Tank Oil : 1.0 Litre
- Effective Oil : 0.8 Litre

Low priced & Smallest & Lightest

From Manual pump to Electric Pump !!

People who are using manual pumps for jack up and press work should pay attention !!

UP-35RH-1M is a great seller with good portability and easy operation.



UP-35RH-1M

Pendant Switch type

Single Acting

Global model available from 100V to 230V.

UP-35RH-1M Standard tank : 1 ℓ

UP-35RH-1ML Large tank : 2 ℓ

- 2.5m pendant switch is included.
- Combines the portability of the manual hydraulic pump and the performance of the electric hydraulic pump.
- Ideal for work in narrow places and high places.
- The tank capacity is 1 liter for standard and 2 liters for L tank.
- Using the inner bag, you can use the pump at any angle.



UP-35RH-1M



UP-35RH-1ML

Model	Commutator Motor (50/60Hz)				Pump performance		Oil Volume (Liter)		Weight (kg)	Valve
	Insulation type	AC Single phase	Output (kW)	rpm	Max Pressure Mpa	Output flow rate	Tank	Effective		
UP-35RH-1M	E type	100V to 230V	0.35	2000	70	0.3 - 0.6	1.0	0.8	7.0	Manual Valve
UP-35RH-1ML							2.0	1.6		

Valve type	Manual Needle Valve
Switch	Pendant switch
Weight ※Including oil	7.0Kg (L tank 2Litres : 8.2kg)
Feature	For single acting model. Pressure holding type.

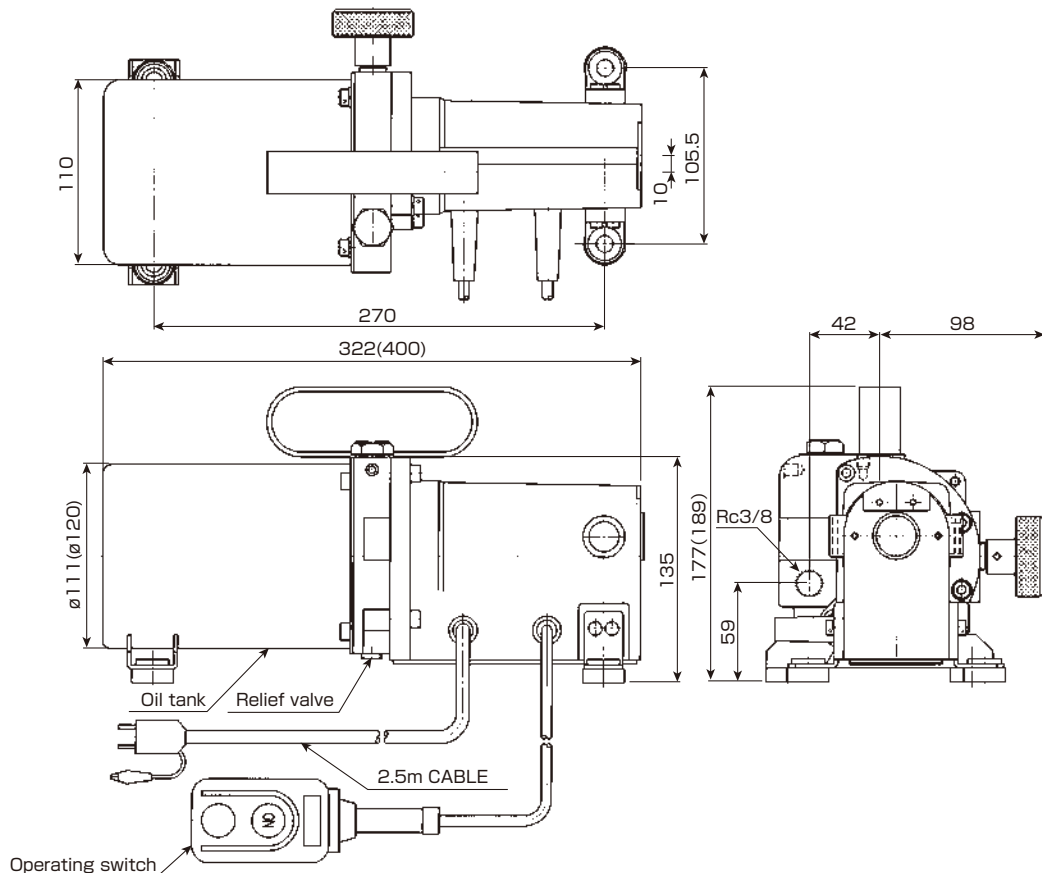
Advance

When the manual needle valve is closed and press ON the pendant switch, the motor rotates and the cylinder advances.

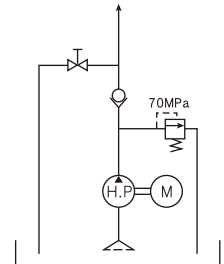
Retraction

When the manual needle valve is opened and the cylinder will return. When the manual needle valve is closed and the cylinder will stop.

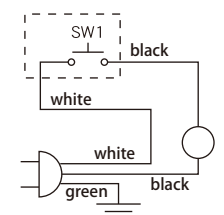
<Dimensions> (mm) ※Dimensions in parentheses are 2 liters tank.



<Hydraulic circuit>



<Electric circuit>



UP-35RH-1MB Integrated Switch type

Single Acting

Global model available from 100V to 230V.

UP-35RH-1MB Standard tank : 1 ℓ

UP-35RH-1MBL Large tank : 2 ℓ

- Switch is integrated on the top of the pump.
- Maximum Operating Pressure : 70Mpa(700Bar).
- Combines the portability of the manual hydraulic pump and the performance of the electric hydraulic pump.
- Ideal for work in narrow places and high places.
- The tank capacity is 1 liter for standard and 2 liters for L tank.
- Using the inner bag, you can use the pump at any angle.



UP-35RH-1MB

Model	Commutator Motor (50/60Hz)				Pump performance		Oil Volume (Liter)		Weight (kg)	Valve
	Insulation type	AC Single phase	Output (kW)	rpm	Max Pressure Mpa	Output flow rate	Tank	Effective		
UP-35RH-1MB	E type	100V to 230V	0.35	2000	70	0.3 - 0.6	1.0	0.8	7.5	Manual Valve
UP-35RH-1MBL							2.0	1.6		

Valve type	Manual Needle Valve
Switch	Integrated switch
Weight ※Including oil	7.5Kg (L tank 2Litres : 8.7kg)
Feature	For single acting model. Pressure holding type.

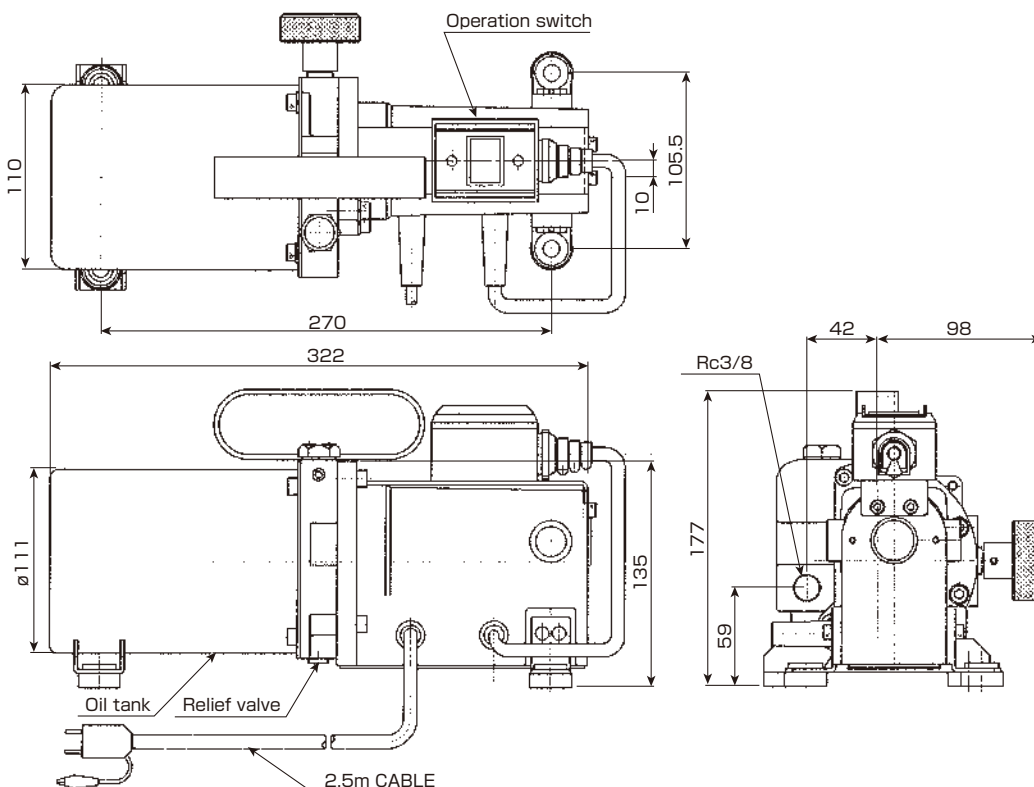
Advance

When the manual needle valve is closed and press ON the integrated switch, the motor rotates and the cylinder advances.

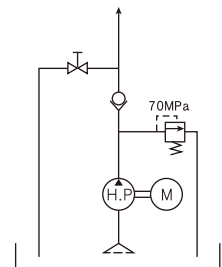
Retraction

When the manual needle valve is opened and the cylinder will return. When the manual needle valve is closed and the cylinder will stop.

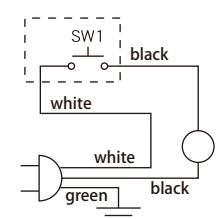
<Dimensions> (mm) ※Dimensions in parentheses are 2 liters tank.



<Hydraulic circuit>



<Electric circuit>



OPTION

Pressure Gauge Type

- UP-35RHG-1M (Standard tank 1 Liter)
- UP-35RHG-1ML (Large tank 2 Liter)
- UP-35RHG-1MB (Standard tank 1 Liter)
- UP-35RHG-1MBL (Large tank 2 Liter)



Pressure gauge cover
(PG-63CB)



Pressure Gauge
(PG-63PF-100MPa)



UP-35RHG-1M
(Standard tank 1Liter)

Joint
(FJ-23)

Mounting bracket
(GA-1)



Joint / Mounting bracket

The UP-35RH-1M series is an ultra-compact, low-cost, high-performance electric hydraulic pump. It can be used at various sites where a manual pump has been used until now.

Applications example

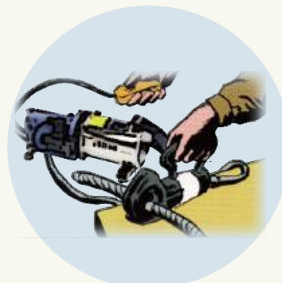
- Lifting in civil engineering and general construction.
- Combination with hydraulic tools like benders, cutters, punchers.
- Pressing and maintenance.



Jacking up



Gear, pulley removal



Wire/rope/cable cutting



Punching

Nittoh Zohki Co.,Ltd.

Sales office :

2-4-10 Kamezawa, Sumida-ku, Tokyo 130-0014 Japan
Tel. +81-3-3625-6551 Fax.+81-3-3625-6553

Factory :

585 Takashi, Mobara-shi, Chiba-Ken 297-0029 Japan
<http://www.nittohpower.jp>